

WINDLASS

REGION CHAIRMAN'S NOTES

This Windlass is an economy edition. This is not due to there being nothing to report to our members, the reverse is true, but solely to the need to keep within the weight limits for posting. This economy has been necessary as we are enclosing with this issue sponsorship brochures for IWALK. This event will be the biggest publicity and fund-raising event ever for IWA. It can only succeed if it has the full support of every member. I hope you will do all you can to assist. Remember, it is not only IWA members who can walk, get your freinds, workmates, club members involved.

As I said above there is much to report on the waterways front, but for this issue I must ask your forebearance. Those of you who are able to attend your branch meetings will be able to read all the current news in 'Council News'. This is distributed monthly to branch committees and should be available at branch meetings.

Just a reminder that the Region Annual General Meeting will be held at 'The Stag', Bressenden Place, London S.W.1, on 16th May 1978. Following the business of the meeting Mr. D. Aston (BWB) will show two sound films - 'Grand Union' showing activity on the Grand Union before the war, and 'There go the Boats'.

Mike West

The most splendid sight of the year has got to be Limehouse Snap Lock with some thirty or so narrow boats all pointing towards the tide-way. As far as the crews were concerned the sight of the river outside as the gates opened, must have been the most horrying sight of the year! Easter Weekend was a bit bracing, to say the least - but nevertheless the majority of the hundred odd boats taking part in the London Ring Cruise battled against the wind and waves to Brentford. Not so dramatic, but equally important, were diversions taking in sundry odd arms and basins - shall look forward to seeing the report based on questionnaires filled in by crews en route.

STOP PRESS - INAUGURAL MEETING FOR NEW BRANCH (see page 2)
All members welcome at first branch meeting on Friday, 12th May at The Royal Arms, East St, Chichester.

GUILDFORD BRANCH

New Branch for South Coast

At a packed public meeting at Chichester on March 3rd, a resolution was passed to form a new Branch in the area served by West Sussex, South and Mid-Hampshire and the Isle of Wight. A steering group has been set up and this is being co-ordinated by Mr. A. White, the Wheel House, Ottery Lane, Nutbourne, Chichester, Sussex. All 451 members living in the area will be allocated to the new Branch, leaving the new Guildford Branch with 919 members, including those living away who asked to belong to that Branch. (Anyone wishing to change their allegiance should notify General Office).

Annual General Meeting

The A. G. M. of the old Guildford Branch took place on 31st March and the new Branch came into being on April 1st. Mike McGrath stood down as Chairman and our thanks are due to him for the sterling service he has performed, both as Chairman and as a founder committee member. His efforts have been instrumental in making the Branches views and ideas felt at Region and Council and has shown them that in all respects Guildford Branch is alive and kicking.

The Chandlery Bring and Buy this year raised over £250 in spite of appalling weather on the day. Many thanks to Godalming Narrow Boats for the venue, to Colin Ward for the organisation and to members for their support.

Surrey County Council's draft Recreation and Management Proposals for the Basingstoke Canal have been published and the Committee are studying them with a view to submitting representations.

Guildford Branch News Control

The Kennet and Avon Canal Trusts scheme to present a plaque to boats reaching head of navigation at Padworth continues this year. The plaques cost £1.15, inc. postage and are available, upon presentation of the usual evidence from David Copley, 27 Greencroft Gardens, Reading. These are of course, available if you are in a hired boat. And don't forget that seven day licenses are available at Blakes Lock.

Working Parties at Lock One on the Basingstoke on May 21st, June 18th and July 16th.

LONDON BRANCH

Stop Press - Trip to Crofton Sunday 28th May. Visit to the Kennet and Avon Canals, including a two hour boat trip from Wotton Rivers to Crofton. A tour of the Beam Engines in steam and a stop in Devises to view the Caen Hill Flight. Depart 9.30 a.m. Richmond Station (Tube and Southern Region) - Cost £3.75, Children £3.00. Return 7.00 p.m. Bring your own lunch - drinks available on boat - details and tickets (and S.A.E. please) from Mr. M. D. Adams, 97 Speer Road, Thames Ditton, Surrey. Telephone 01-398-7363.

By the time you get 'Windlass' it may be too late! Which just goes to show that you should have booked earlier for the Archive Film Show at the Museum of London, London Wall, EC2 on May 11th at 6.00 p.m. and 8.15 p.m. Details from Len House on 01-226 1175

SUTTON COLLEGE WATERWAY LECTURES

Admission 40p

Students & OAP's 25p

10th May - Film of the Volga/Don Canal
17th May - The French Canals

7.30 p.m. in the Lecture Theatre, Sutton College of Liberal Arts, Cheam Road, St. Nicholas Way, Sutton, Surrey. Telephone 01-643 0142

22nd May - Mikron Theatre Group

KENT & EAST SUSSEX BRANCH

The Branch is hoping to enter a float in the Maidstone Carnival on July 22nd. We have a splendid design and a member has volunteered to construct the float providing we can obtain a trailer for the month preceding the event. Maidstone Carnival has always been a good source of publicity and revenue, so if any member has a trailer available for loan during the period, please contact Ian Ruck, 11 Wickenham Crescent, Willesborough, Ashford, Kent. (Telephone 26792).

As many helpers as possible are needed on the day, to sell programmes and assist with our sales stand.

Branch Outing - Sunday 10th September

A coach trip is being organised from Ashford and Maidstone to the Thames Flood Barrier at Woolwich. There will be a guided tour of the works, then the coach will take the party to Greenwich for lunch, after which there will be a boat trip to Tower Pier. It is hoped to arrange a guided tour of St. Katherines Yacht Haven.

Basingstoke Working Party - Weekend in August

Response to the proposed working party in April was so pathetic that the event was dropped. Ken Parish is now trying to get another trip off the ground during August. Anyone who can make any weekend or Sunday in August please contact Ken Parish, 201 Wincheap, Canterbury, Kent. (Telephone Canterbury 61609).

OXFORD & SOUTH BUCKINGHAMSHIRE BRANCH

At the time of going to press for this edition of 'Windlass' this Branch is 'between' Committees, following our A.G.M. on 8th March, so rather than lumbering a newcomer, I thought I would try and act as Publicity Officer - just once!

Firstly, I would like to thank our outgoing Chairman, Dennis Jones, and the rest of the Committee for 1977/78 for all their hard work and more especially a very warm thank you for Jack Taphouse, who has been involved with this Branch (formerly the Oxford Section) since its inception. We have a lot to thank him for and I am sure all the Oxford and South Bucks. Branch members will join with me in wishing him a happy 'retirement' from committee work.

Now to 1978/79. Our new Chairman is Tony Harrison, with Rosemary Spooner as Treasurer, Ian Burgoyne as Publicity Officer and myself as Secretary once again. Other Committee members are:- Norma Perry, Maureen Finch, Ray Parsons, Peter Thorp, Joe Kennell, John Pugh and Theo Olive, who was with us last year. Mary Taphouse has, once again, agreed to be our Membership Secretary.

As space is limited for this edition of 'Windlass'. I list briefly our activities over the next few months. For further information, please contact me, Pam Pugh, 10 Vanner Road, Witney, Oxon. Telephone Witney 71138.

- | | | |
|--------------|---|--|
| 10th May | - | "Waterways of Western Europe" - Hugh McKnight
8.00 p.m. Morris Radiators Sports & Social Club,
Frenchay Road, OXFORD. |
| 13th May | - | Jumble Sale - 2.00 p.m. SS.Mary & John Church
Hall. Cowley Road, OXFORD. |
| 10/11th June | - | IWALK |
| 1st July | - | Barbecue - Manor Farm, THRUPP, Oxford.
8.00 p.m. - 1.00 a.m. "Blue Mountain Band".
Tickets in advance, £2.50 each, including food. |

HERTFORDSHIRE BRANCH

Shell Inland Waterways Award

At the end of last year this Branch applied to the Shell Petroleum Company for an award under the above scheme to assist the Branch with the completion of the improvement of the towpath on the Grand Union Canal near Tring. It is intended to restore an additional length of the stone towpath embankment south of the earlier length restored by volunteers two years ago.

An inspection of the site was made by boat in December and Shell have recently announced the award of £25 towards the cost of the work leaving about £100 to be found by the Branch. The Branch is grateful for this contribution and consider that it was generous to make any award in the circumstances - the inspection boat was refuelled from a Mobil petrol can!

Graham Banks the Branch Working Party Organiser will now be making plans to organise the work. Volunteers to Graham at 8 Wren Wood, Welwyn Garden City (22927).

IWALK, Saturday 10th and Sunday 11th June - The Branch is to organise sponsored walks in conjunction with other voluntary and amenity societies along the Lee and Stort Rivers and the Grand Union Canal during the weekend of 10th and 11th June. Walkers may travel in either direction along the lengths of waterway below and can join or leave the walks at any of the checkpoints established at about three mile intervals along the route.

CHELMSFORD BRANCH

Following representations by the Branch, Essex C.C. has dropped proposals to demolish buildings of historic interest at Goings wharf, Heybridge.

At the Canal Company's A.G.M. the Chairman reported a successful year, with a small profit. It was intended this year to restore Springfield Lock, so that boats could again reach Chelmsford basin.

Pre Iwalk strolls along the Chelmer & Blackwater will be on May 11th visiting the 'Ship' Heybridge, & June 8th, visiting the 'Army and Navy' at Chelmsford - both 8pm.

The Region/Branch address list has been omitted from this issue - it's AGM season & Branch Officers are involved in the annual musical chairs! Revised list in next issue - if desperate for an address, contact General Office or Mike West.

Next 'Windlass' will be under new management - all contributions please to Neil Carter, N.B. Swan, Willow Wren Wharf, Hayes Rd, Southall, Middlesex.

The present editorial team is grateful to Neil for taking over - and are sure all readers will be equally grateful! Press date for next issue is 13th May!

"ANCIENT AND BIZARRE" - sing along with WRG - Navvies song book, containing fifteen vocal gems, complete with words and music.

Price 25p + 7p postage from WRG Sales, 15 Nuns Orchard, Histon, Cambridge - don't miss it.

Neil Carter, NB Swan, lost his tortoiseshell cat at City Rd Basin during the London Ring Cruise. Neil thinks she may have got on another boat - if anyone has found her, please phone 01-848-8054

SMALL AD.

Friendly 'digs' with mooring for narrow boat under fifty feet available soon. River Thames near London. Details from Box 143, Windlass, 114 Regents Park Rd, London NW1 8UQ

IWALK

An IWALK Brochure should be enclosed with this issue (In fact, some of you may receive two Windlasses - this is to ensure that those who have asked to belong to a Branch other than where they live get the right brochure). Some branches are including an insert in the brochure, which posed a problem - 4500 Windlasses to be sorted into Branches. You may not know that Windlass is addressed by the Addressograph machine at General Office-operated (if thats the right word, I always feel that the machine is in charge!) by volunteers. However, the machine cannot distinguish between branches - it spits out all the Region addresses indiscriminately! So IWALK organisers & Branch Committee members got together at Regents Park Road, with 4500 envelopes, a map plus local knowledge and sorted them into Branches. This will inevitably not be 100% accurate - so please accept apologies if you have not received the right brochure. If you want information in addition to that you have received, please contact the organiser as shewn in this insert. You are welcome to join in any Branch Walk - details of walks in other regions in April 'Waterways'.

Dont forget IWALK could be the biggest thing since sliced bread! and I quote the National Treasurer, who has more than a passing interest in the result! Of equal value is the publicity aspect. The IWALK committee are doing their best to obtain maximum National publicity- members can do their bit by making sure all their freinds and neighbours know all about IWALK - getting them to join in & when asking people to sponsor, explaining all about IWA.

CHELMSFORD BRANCH

Sunday 11th June - 3 walks - all on the Chelmer & Blackwater

Chelmsford to Hoe Mill Lock - 8 miles (&return if desired)

Maldon to Hoe Mill Lock - 5½ miles (& return if desired)

Entire length of Navigation - 14 miles - starting either end

ORGANISER: Gerald Parker, Flat 2, Coval Cottage, Coval Lodge,
Rainsford Road, Chelmsford, Essex (Chelmsford 50479)
Contact Gerald for details of start points and times.

OXFORD BRANCH

Details not yet finalised but contact:

Pam Pugh, 10 Vanner Road, Elmfield. Witney, Oxon. (Witney 71138)

GUILDFORD BRANCH

Sunday June 11th - 5 walks

R. Wey - Godalming to West Byfleet - 16 miles

K. & A. - Reading to Newbury - 20 miles

Basingstoke - Brookwood to Fleet - 13 miles

Itchen - Winchester to Southampton - 10½ miles

Wey/Arun/Rother - Circular Route - 18 miles

ORGANISER: Tony Davis, 55 Holme Chase, St. Georges Ave, Weybridge.
(Weybridge 44261)

HERTS BRANCH

Saturday 10th June - 2 walks

R. Lee - Enfield to Hertford - 14 miles

R. Stort - Fieldes Weir (nr Hoddesdon) to Bishops Stortford- 13 m.

Sunday 11th June

Grand Union - Batchworth to Marsworth - 21 miles

ORGANISER: Steve Willot, 46 Mount Grace Rd, Potters Bar, Herts.
(Potters Bar 53293)

LONDON BRANCH

Sunday June 11th - 2 walks

Grand Union - Paddington to Rickmansworth - 26 miles

Grand Union - Brentford to Rickmansworth - 19 miles

ORGANISER: Mike Stimpson, 83 Sunny Bank Rd, Potters Bar, Herts.
(Rickmansworth 70425)

Walkers can start & finish at any of six checkpoints, giving walks of between 5 & 26 miles, - details from Mike Stimpson.

KENT AND EAST SUSSEX BRANCH

Sunday June 11th

R. Medway - Tonbridge to Hartlake Basin & return - 5½ miles

Start from the IWA Tonbridge moorings, Medway Wharf Road. Due to the poor state of the towpath the walk has been restricted to this limited distance, although several members have already expressed a wish to walk the course several times to increase the distance. Start from 10 am. Refreshments available at Hartlake Bridge.

ORGANISER: Ian Ruck, 11 Wickenden Cres, Willesborough, Ashford, Kent. (Ashford 26792)

(Ian will be pleased to hear from potential marshalls and timekeepers as well as walkers).

INLAND WATERWAYS ASSOCIATION
LONDON BRANCH WALK
SUNDAY 11 JUNE 1978



Please send details of maps, guides, books etc. for sale

NAME: _____
ADDRESS: _____

Interested in waterways?

Are you interested in any of these . . .

- Boating? Watching wildlife?
- Angling? Conservation?
- Rambling? Transport by water?
- Restoration of derelict waterways?



If you answer 'yes' to any of the above, you should join the Inland Waterways Association.

Some benefits of membership

- * IWA magazine *Waterways* with the latest waterway news
- * Local newsletter listing events in your area
- * Meetings, talks and film shows organised by your local Branch
- * Waterway rallies throughout the country
- * Involvement in canal restoration
- * Information on waterway matters
- * Meeting other people with the same interests as yourself

so join the **IWA**
— find out more about waterways
and help to secure the future

If it were not for the IWA, there would be fewer waterways open for recreation today. Your membership will help the IWA in its campaign to improve and extend the waterway system.

Annual subscription: adult £4, husband/wife £5, junior (under 18) £1.05

To: The Inland Waterways Association, 114 Regent's Park Road, London NW1 8UQ.

I/We enclose £..... for IWA membership.

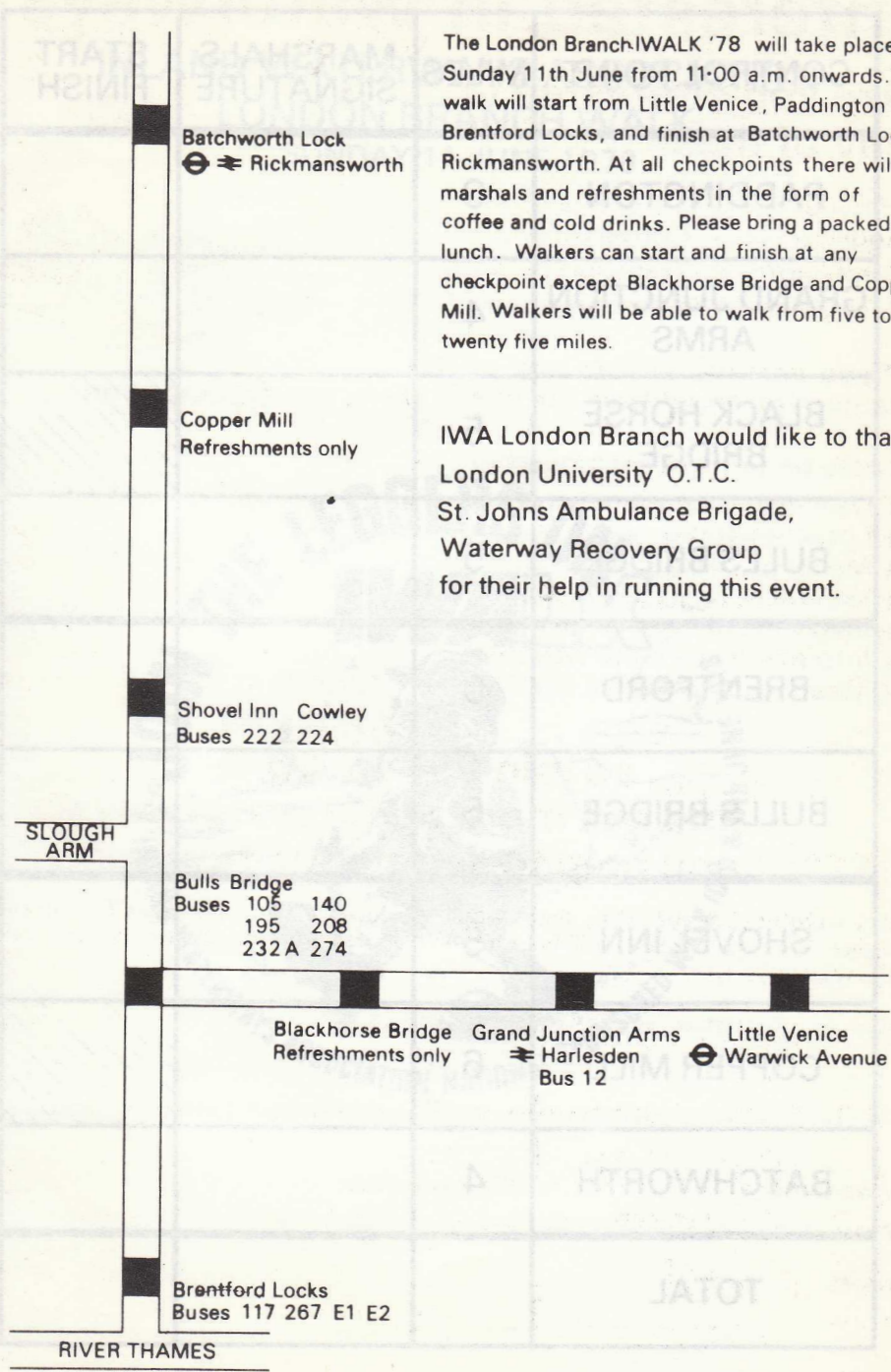
Please send details of maps, guides, books etc. for sale

NAME.....

ADDRESS.....

.....

.....



Batchworth Lock
 ⊕ ➔ Rickmansworth

The London Branch IWA '78 will take place on Sunday 11th June from 11.00 a.m. onwards. The walk will start from Little Venice, Paddington and Brentford Locks, and finish at Batchworth Lock, Rickmansworth. At all checkpoints there will be marshals and refreshments in the form of coffee and cold drinks. Please bring a packed lunch. Walkers can start and finish at any checkpoint except Blackhorse Bridge and Copper Mill. Walkers will be able to walk from five to twenty five miles.

Copper Mill
 Refreshments only

IWA London Branch would like to thank London University O.T.C. St. Johns Ambulance Brigade, Waterway Recovery Group for their help in running this event.

Shovel Inn Cowley
 Buses 222 224

SLOUGH ARM

Bulls Bridge
 Buses 105 140
 195 208
 232 A 274

Blackhorse Bridge Refreshments only Grand Junction Arms Harlesden Bus 12 Little Venice Warwick Avenue

Brentford Locks
 Buses 117 267 E1 E2

RIVER THAMES

CONTROL POINT	MILES	MARSHALS SIGNATURE	START FINISH
PADDINGTON	0		
GRAND JUNCTION ARMS	4		
BLACK HORSE BRIDGE	5		
BULLS BRIDGE	5		
BRENTFORD	0		
BULLS BRIDGE	6		
SHOVEL INN	5		
COPPER MILL	6		
BATCHWORTH	4		
TOTAL			

IWALK

SATURDAY 10th AND SUNDAY 11th JUNE 1978

SPONSORSHIP BOOKLET



**ORGANISED IN AID OF VOLUNTARY WATERWAY
RESTORATION PROJECTS THROUGHOUT THE
COUNTRY BY THE INLAND WATERWAYS
ASSOCIATION IN CONJUNCTION WITH
INDEPENDENT WATERWAY SOCIETIES
AND BOAT CLUBS**

The National Sponsored Walk—/WALK—as we know it, affords a unique opportunity for all lovers of the waterways to join together in a united effort to draw attention to the present state of the towpaths, and at the same time raise a large sum of money for the Association's National Waterways Restoration and Development Fund. We had hoped to walk all the towpaths in the country, but this is not possible owing to the neglected state of many of them.

Our inland waterways form a unique and special part of the national heritage of which we are justly proud, so I urge all of you to help in making the weekend of 10th/11th June one that we can look back on with pride.

Here then is a great chance for fishermen, walkers, boaters, and those who just like nature, to join together in a united cause.

Good luck and good walking.

KENNETH GOODWIN—*Chairman*
IWA National Waterways Restoration and Development Fund

For over 30 years the IWA has campaigned for the retention and restoration of inland waterways and many people have given up their spare time to work, often miles from home, clearing rubbish and restoring canals for the purpose of preserving our heritage. At the same time, it is the desire of them all to improve the environment for people who live in the area, or who enjoy walking, canoeing, fishing, boating, painting or just looking at the sheer beauty around them.

Much money is still needed by the National Waterways Restoration Fund to complete the work already in progress on many canals and rivers. It is for this purpose, and to demonstrate the value and beauty of the waterways, that sponsored walks are being held all over the country on 10th/11th June. The waterway societies which take their names from the canals they work so hard to restore and preserve are working alongside the IWA on /WALK as on many other projects. We hope you will join with us to raise money to allow today's volunteer 'Navvies' to complete their task.

THE WATERWAYS ARE YOURS TO ENJOY . . .

. . . HELP US TO PRESERVE THEM

Saturday and Sunday—10th/11th June 1978.

Thank You,

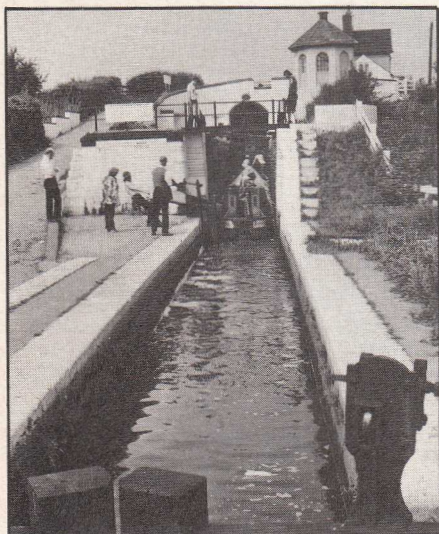
JANIE CHAMPION—*Chairman*
The Inland Waterways Association Sponsored Walk Committee

Altogether there are over 3,000 miles of navigable rivers and canals in England and Wales, but if it were not for the Inland Waterways Associations, formed in 1946, there would be few waterways left today for boating and other forms of recreation.

IWA is for everyone interested in canals and rivers. It is in fact the only national organisation formed to promote the waterways of Britain—their restoration, retention and development. And it promotes, too, all forms of waterway recreation . . . including pleasure cruising, canoeing, angling, rambling—as well as commercial transport.



Do you really want your canal to look like this?



. . . Or do you prefer this?

Picture: Derek Pratt, London.

The IWA has always exhorted the Government not to close canals but to accept that they are an asset that must be properly maintained. The IWA has shown that it is cheaper to restore a canal than to fill it in; for instance, the estimated cost of filling in the Ashton and Peak Forest Canals, near Manchester, was £858,000—whereas the actual cost of restoration was only £437,500!

Money is raised by the IWA and independent waterway societies throughout the country for the National Waterways Restoration and Development Fund to enable the restoration of derelict waterways to be carried out—over £70,000 in the last eight years. The restoration schemes financed by this money are themselves the work of volunteers.

IWA also organizes boat rallies and exhibitions to publicise its work and aims, and regular meetings for members and non-members are held all over the country.

Inland Waterways Association
114 Regent's Park Road, London NW1 8UQ
Telephone: 01-586 2510

ABOUT IWALK . . .

Although *IWALK* is a national event, it is organised on a local level, and it involves local societies and organisations. Thus *IWALK* gives you a chance not only to help out work to improve the waterways generally, but to show your interest in the environment of your own area: the value of good towpaths for walking, facilities for boating and fishing, and for water activities for young people. Your organisation can benefit, too, by sharing the sponsorship money you raise during *IWALK*.

Special certificates will be presented individually to all *IWALKers*, when you have collected your sponsorship money and sent it to the local organiser. Please try to do this within two weeks of *IWALK*.



*Part of a sponsored walk
on the Leeds and Liverpool
Canal high in the Pennine Hills.
Picture: Derek Pratt, London.*

The centre pages of this booklet describe the walks in your area in detail; please contact the local organiser if you have any queries. But wherever you walk, please remember . . .

- ★ ***Wear strong shoes and waterproof clothing.***
 - ★ ***Please observe the marshals' instructions at all times.***
 - ★ ***You will meet boaters, anglers and other walkers during your walk; please show consideration for other waterway users at all times.***
 - ★ ***Children under 12 years of age must be accompanied by an adult.***
 - ★ ***The Inland Waterways Association will make every effort to ensure the safety of walkers, but cannot accept responsibility for any accidents or loss of or damage to property.***
 - ★ ***And, finally, have fun!***
-

WILL YOU SPONSOR 'TRISTAN'?

'Tristan' is a boat horse, one of the few remaining out of the thousands which once plodded along the canal towpaths of Britain. 'Tristan' pulls an excursion boat for the Cromford Canal Society along a beautiful length of canal in the Peak District of Derbyshire.

On Sunday 11th June, 'Tristan' will be towing a boat about six miles on the Cromford Canal as our *IWALK* mascot. If you appreciate the beauty of our canals and believe it is important to restore and preserve them for the benefit of everybody, but are unable to join *IWALK* yourself, then help us by sponsoring 'Tristan'. Just fill in the form below and post it to . . .

IWALK

**The Inland Waterways
Association**

**114 Regent's Park Road
London NW1 8UQ**

Look out for 'Tristan' in your newspaper and on television this June!



Drawing by Simon Stoker.

*** I wish to sponsor 'Tristan' for per mile.**

*** I enclose cheque/postal order for towards
'Tristan's efforts for *IWALK*.**

Name

Address

.....

.....

*(*Delete as applicable)*

No need to be bored while you walk
(or to help you revive afterwards)!

READ THE BRIGHTEST,
MOST TOPICAL AND MOST
INFORMATIVE MAGAZINE
FOR PEOPLE LIKE *YOU!*

& RIVERBOAT Canal

MONTHLY

Read Windlass — you may not agree with him, but...
Try W.C. Keel for a good story... join regular
contributor Anthony Burton on his travels... enjoy great
photo-features... enter free competitions with super
prizes to be won... Postlines — your letters...
Waterlines — all the news... Boat tests... Cruise
reports... Practical advice for owners, hirers and
builders... new product reports... events... rallies...
regular features for women and the children...
something for all who love the waterways.

Order it from your newsagent
or marina NOW.

Or send your subscription
(£6.00 per annum) to:
Lockgates Publishing Ltd.,
15 Newstead Grove,
Nottingham NG1 4GZ.

IT'S ALL IN
**Canal &
Riverboat
Monthly** price
40p